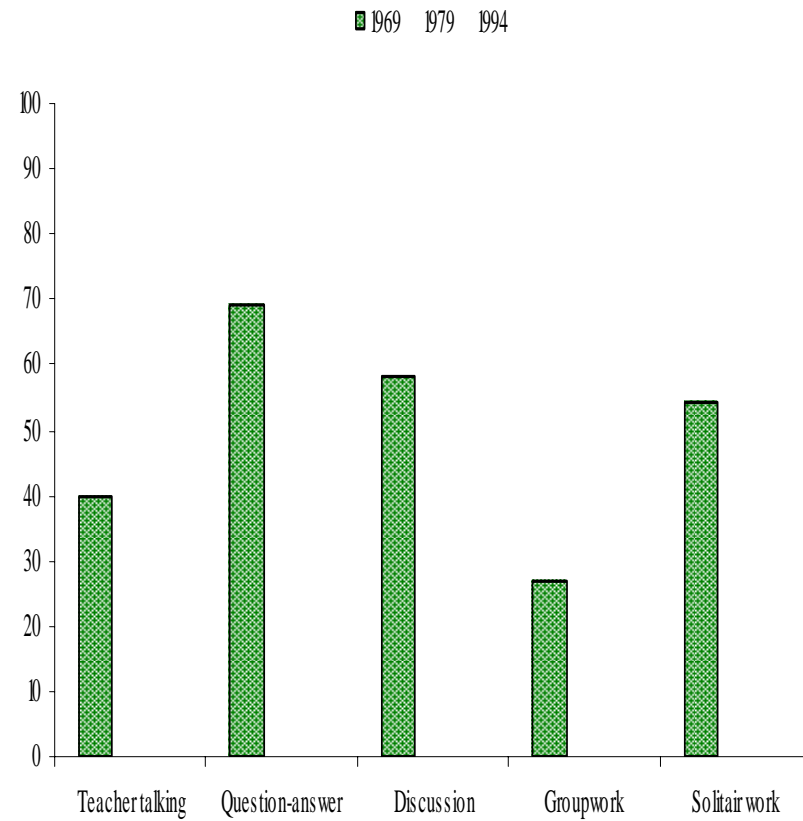
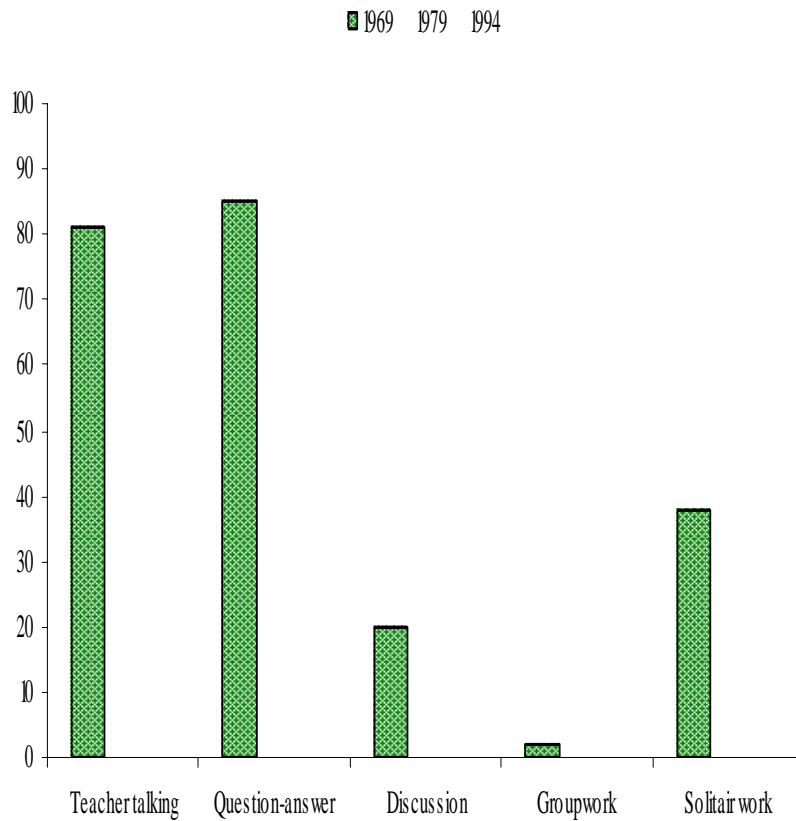


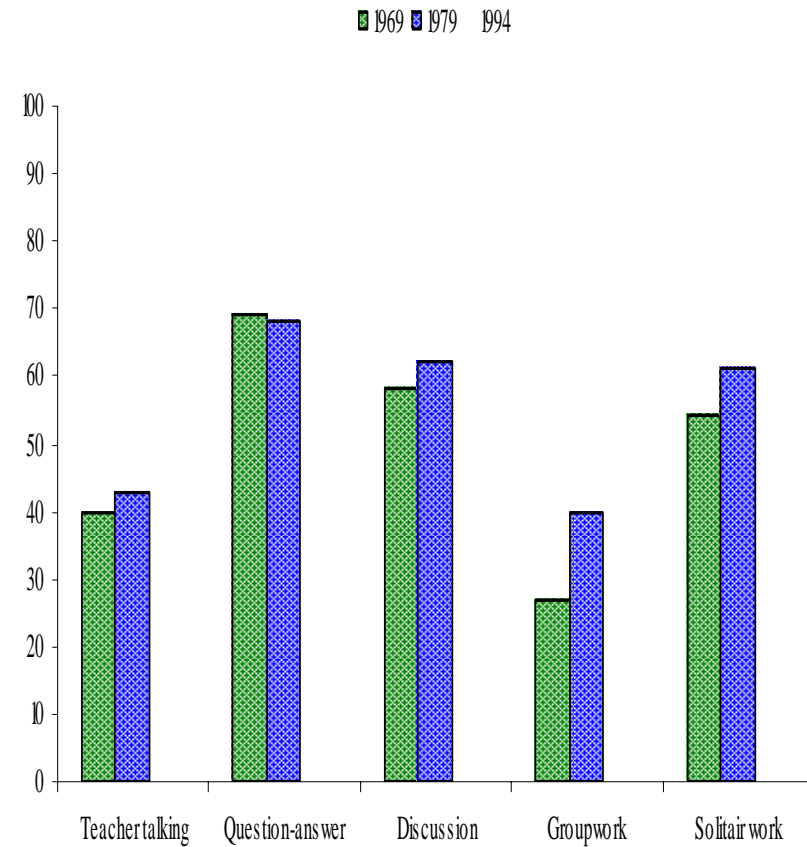
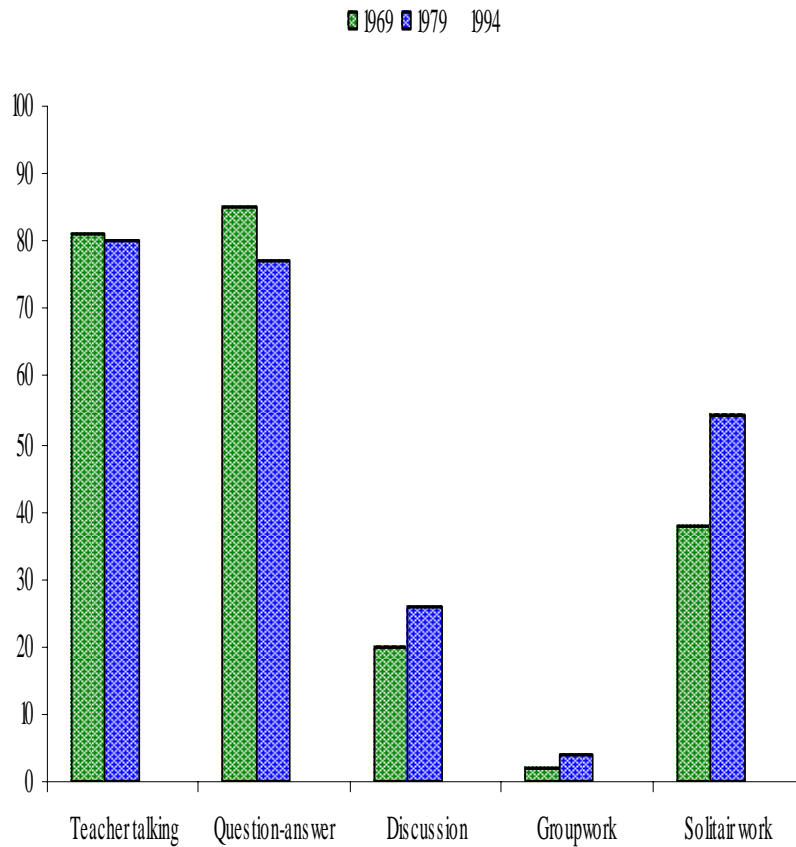
Working methods in daily use



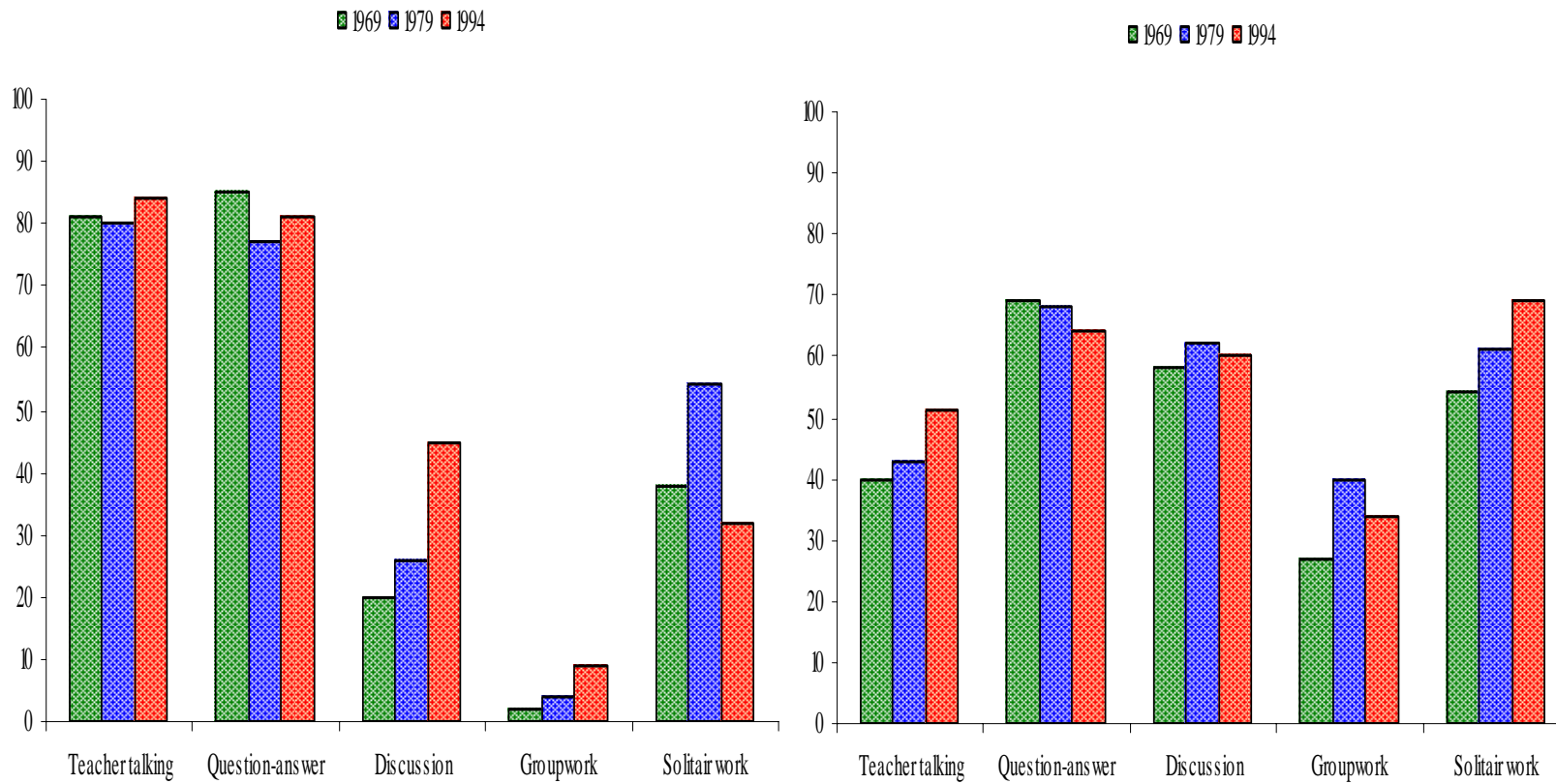
Working methods in daily use



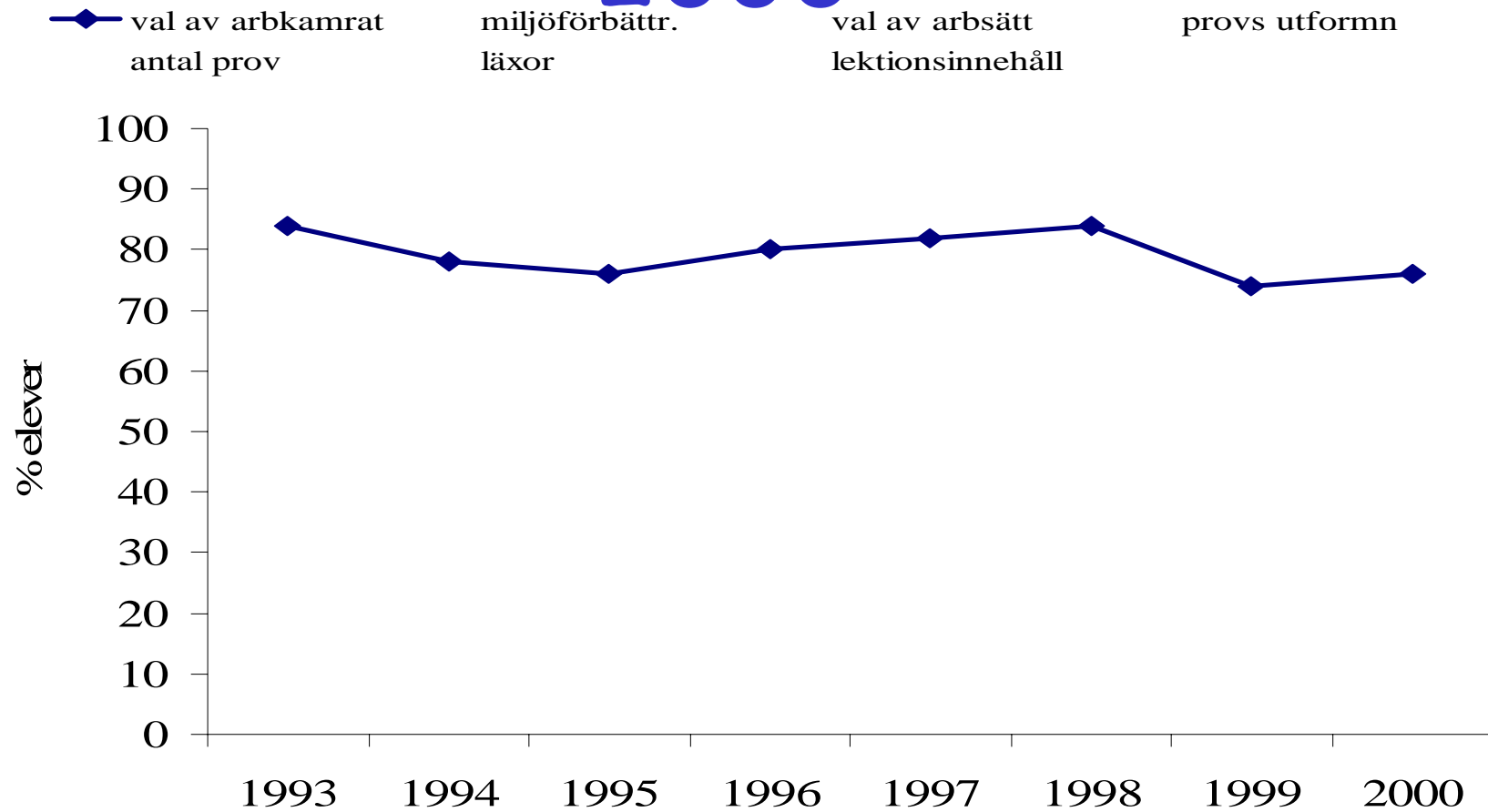
Working methods in daily use



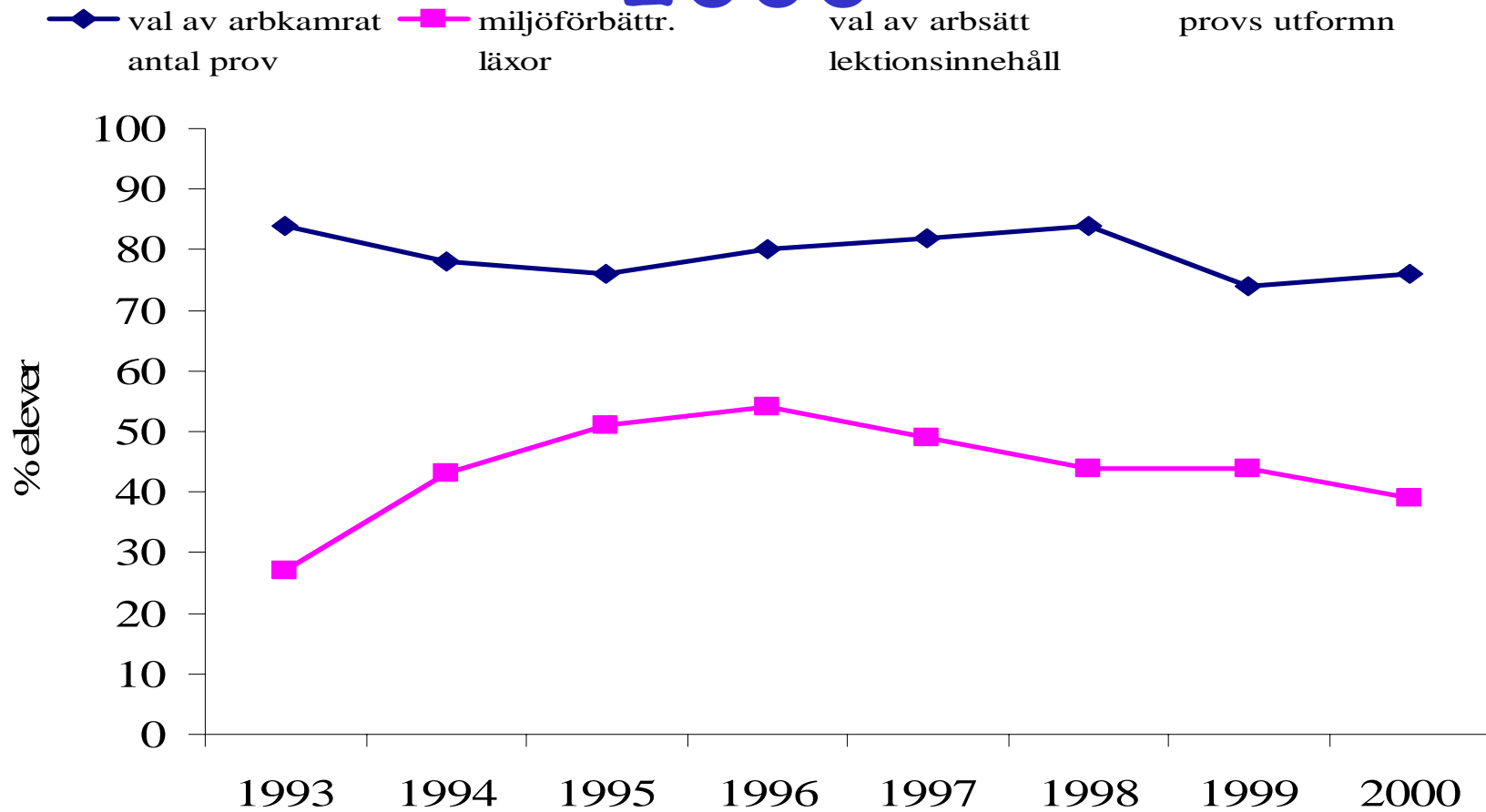
Working methods in daily use



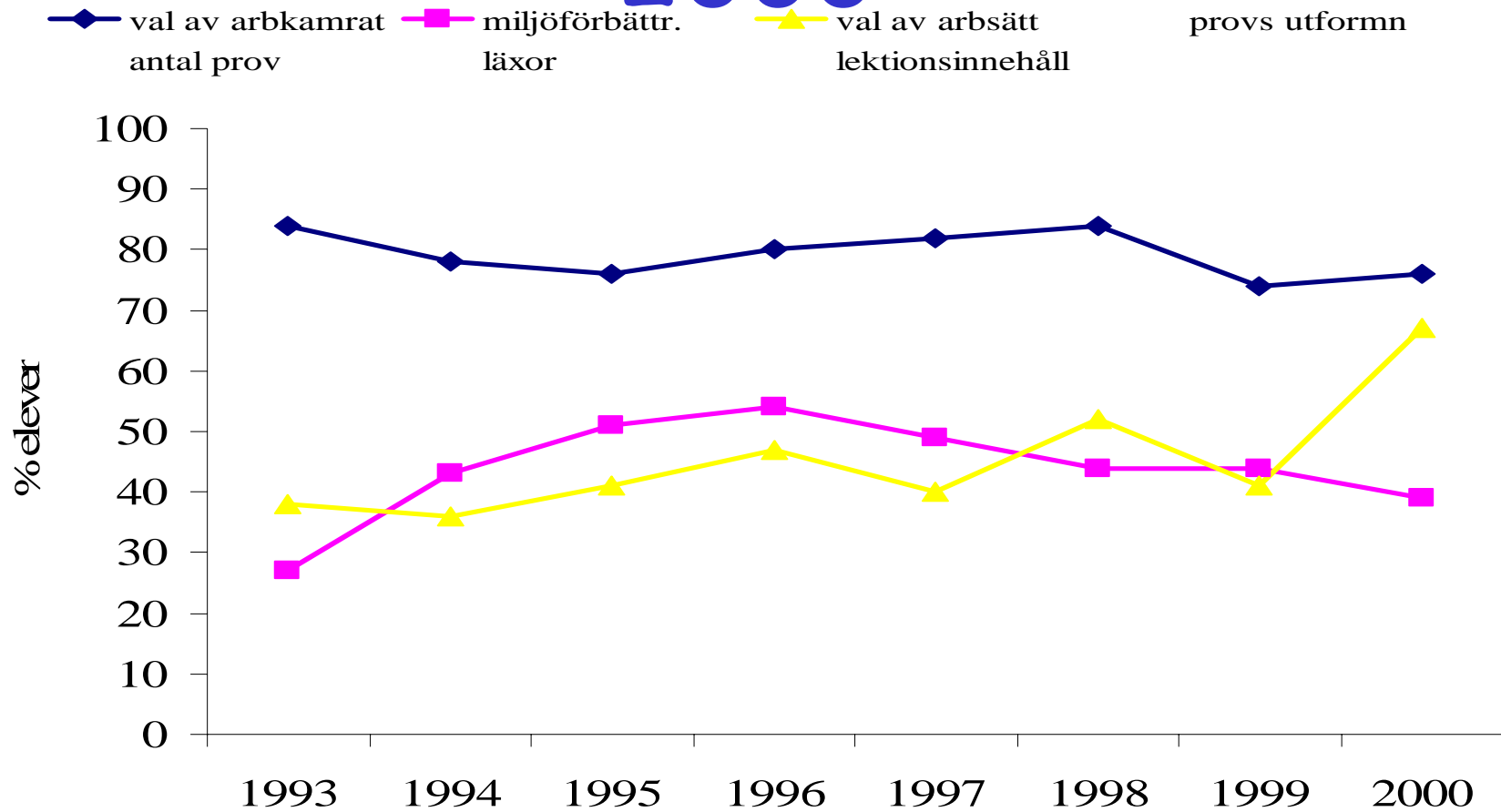
Elevinflytande år 9, 1993-2000



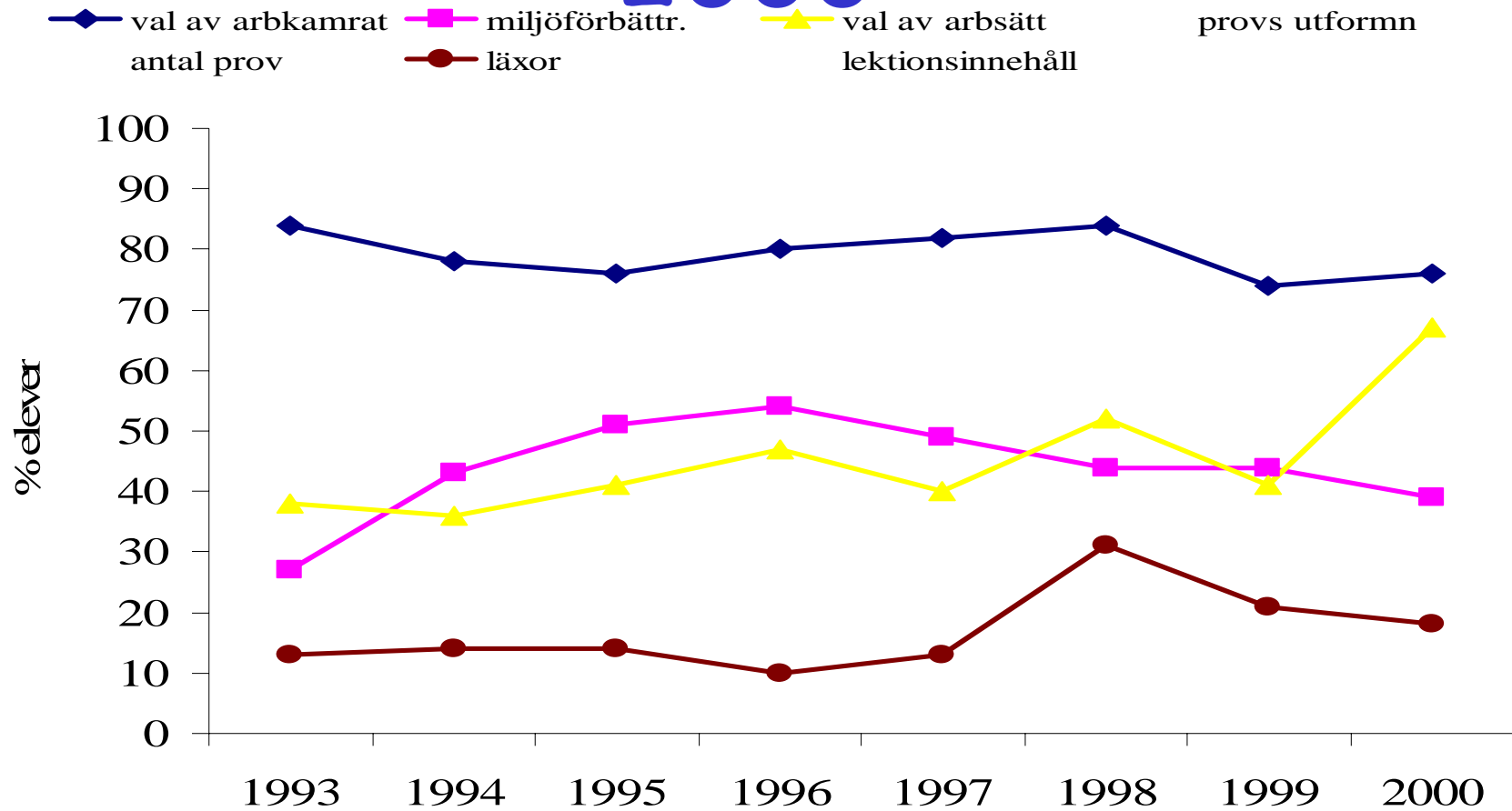
Elevinflytande år 9, 1993-2000



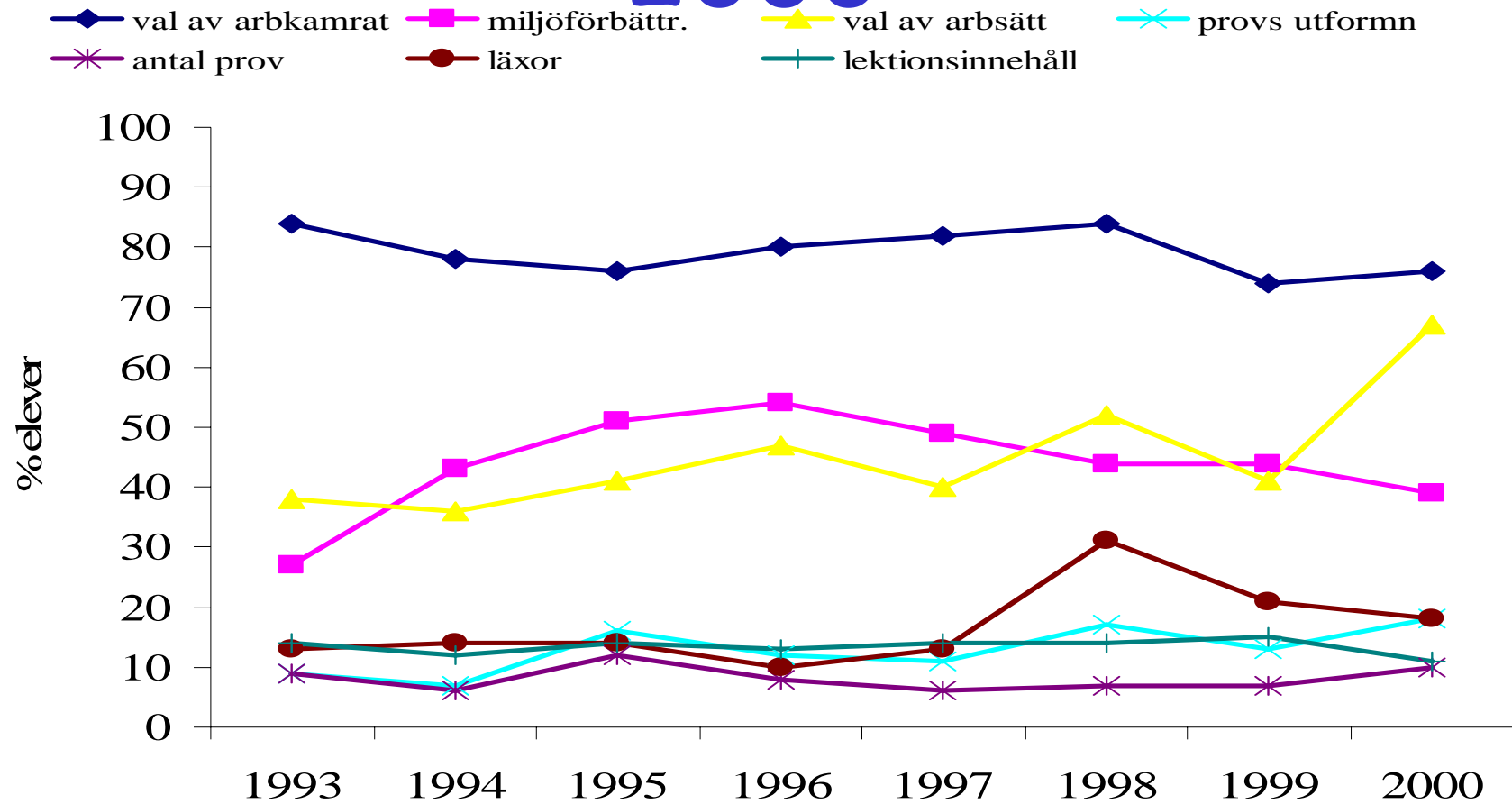
Elevinflytande år 9, 1993-2000



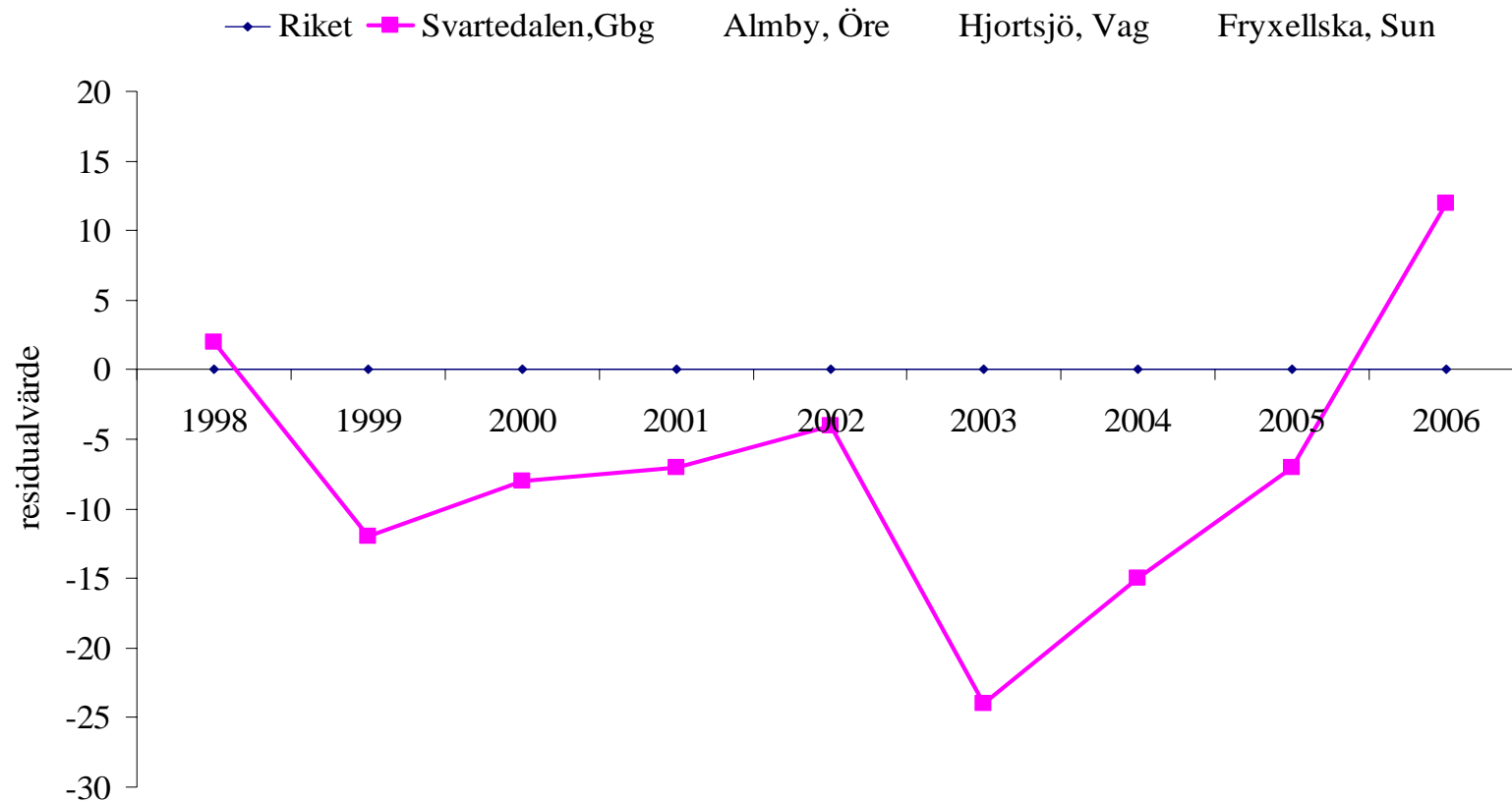
Elevinflytande år 9, 1993-2000



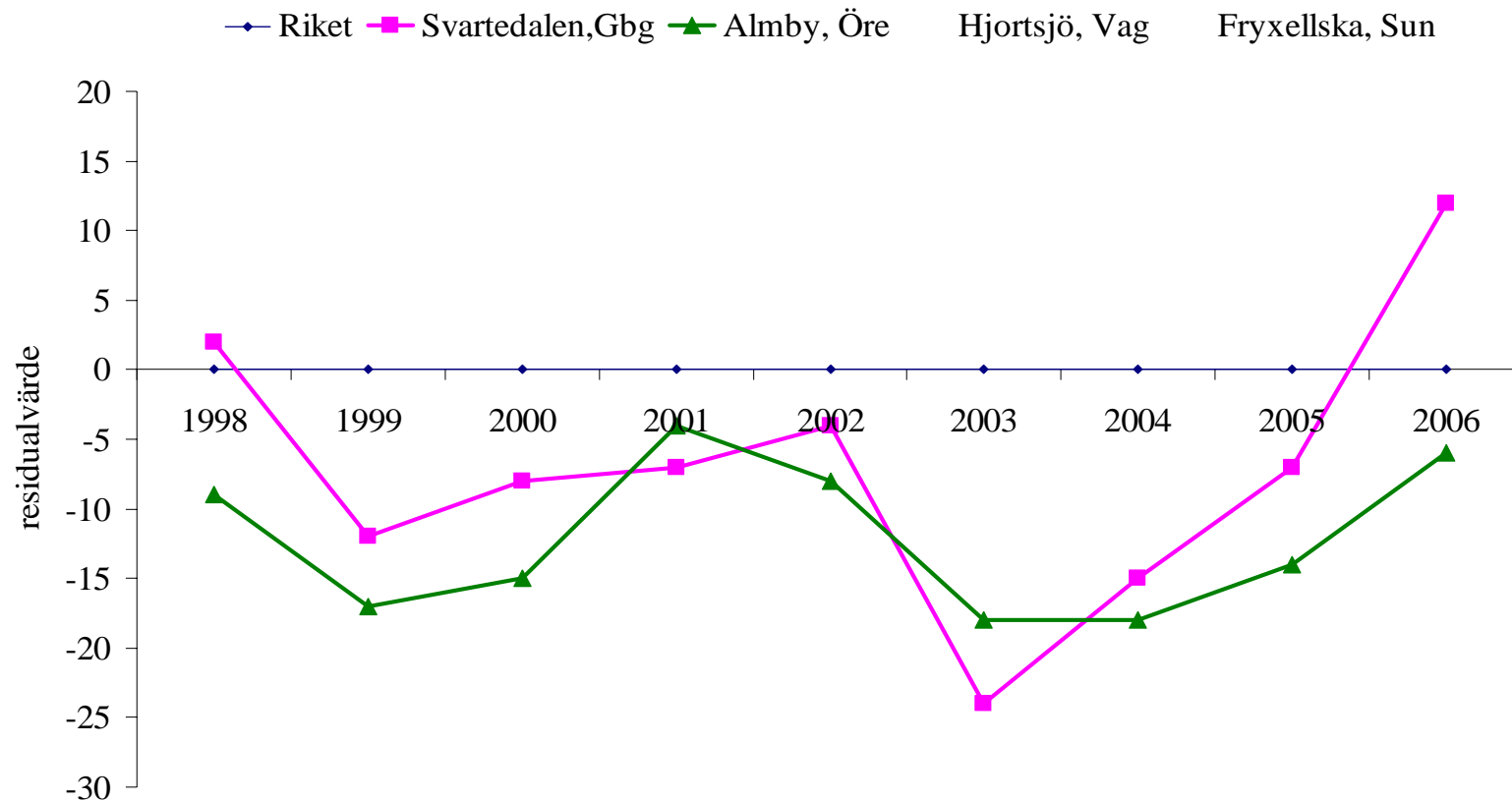
Elevinflytande år 9, 1993-2000



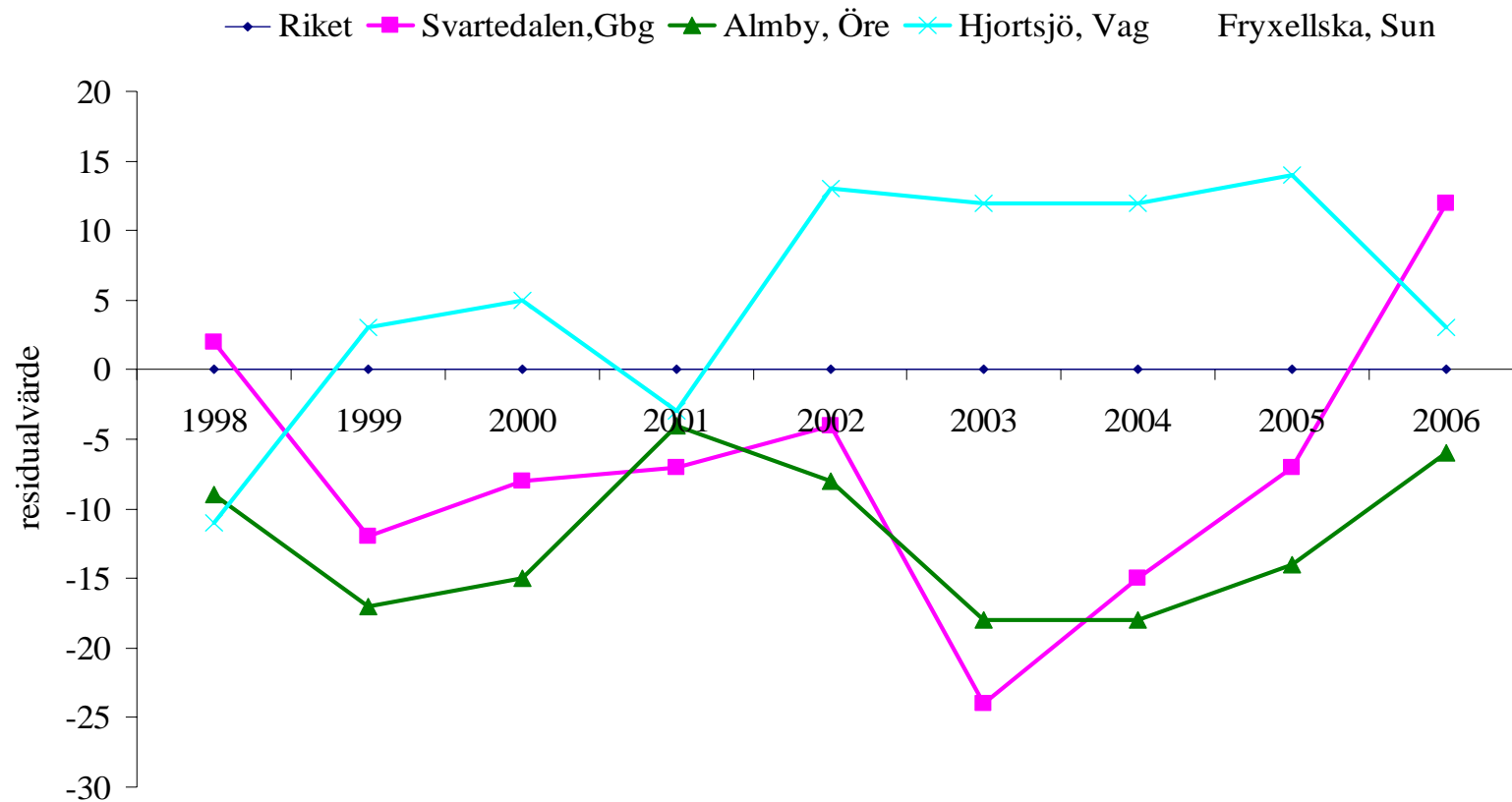
Development of school results adjusted values



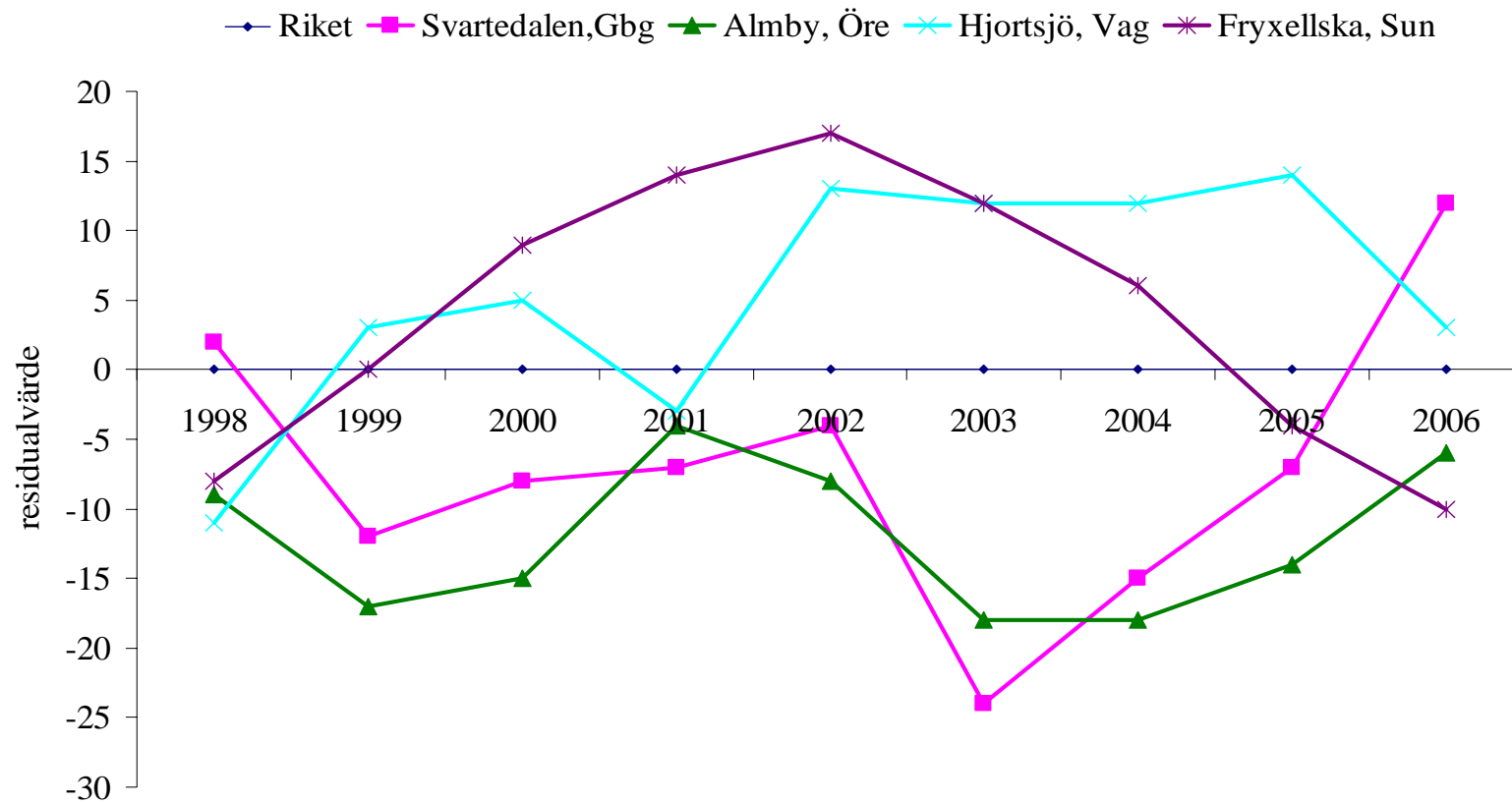
Development of school results adjusted values



Development of school results adjusted values

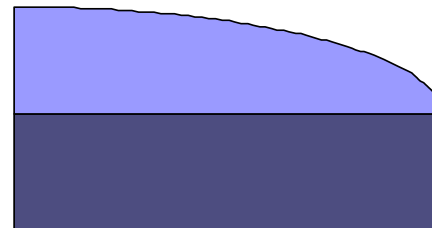


Development of school results adjusted values



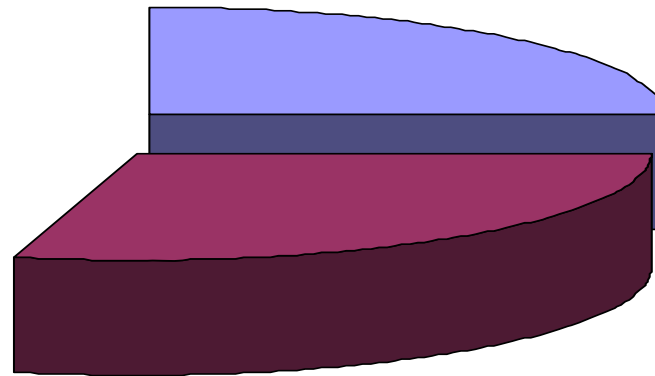
The effect of school inspections

■ ej förändrade mer positiva mer negativa



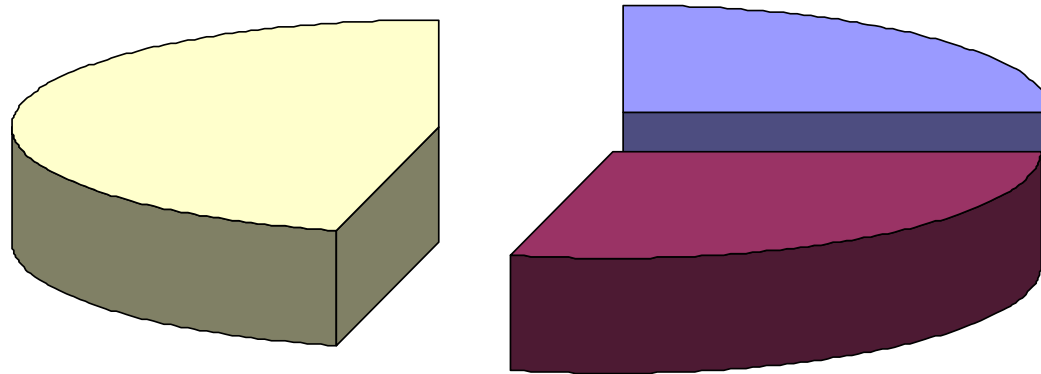
The effect of school inspections

■ ej förändrade ■ mer positiva ■ mer negativa



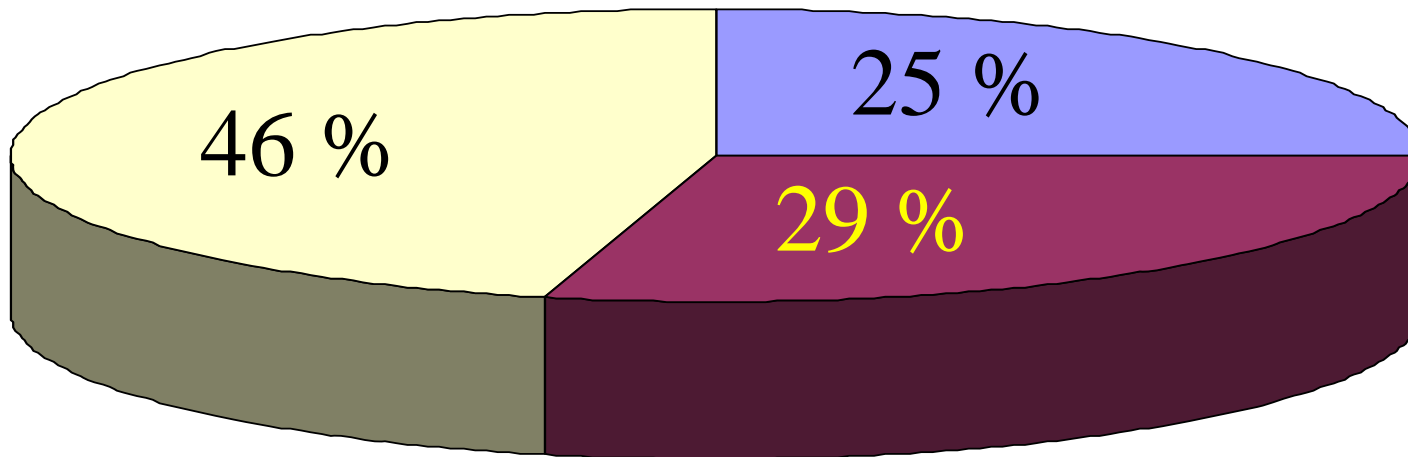
The effect of school inspections

■ ej förändrade ■ mer positiva ■ mer negativa

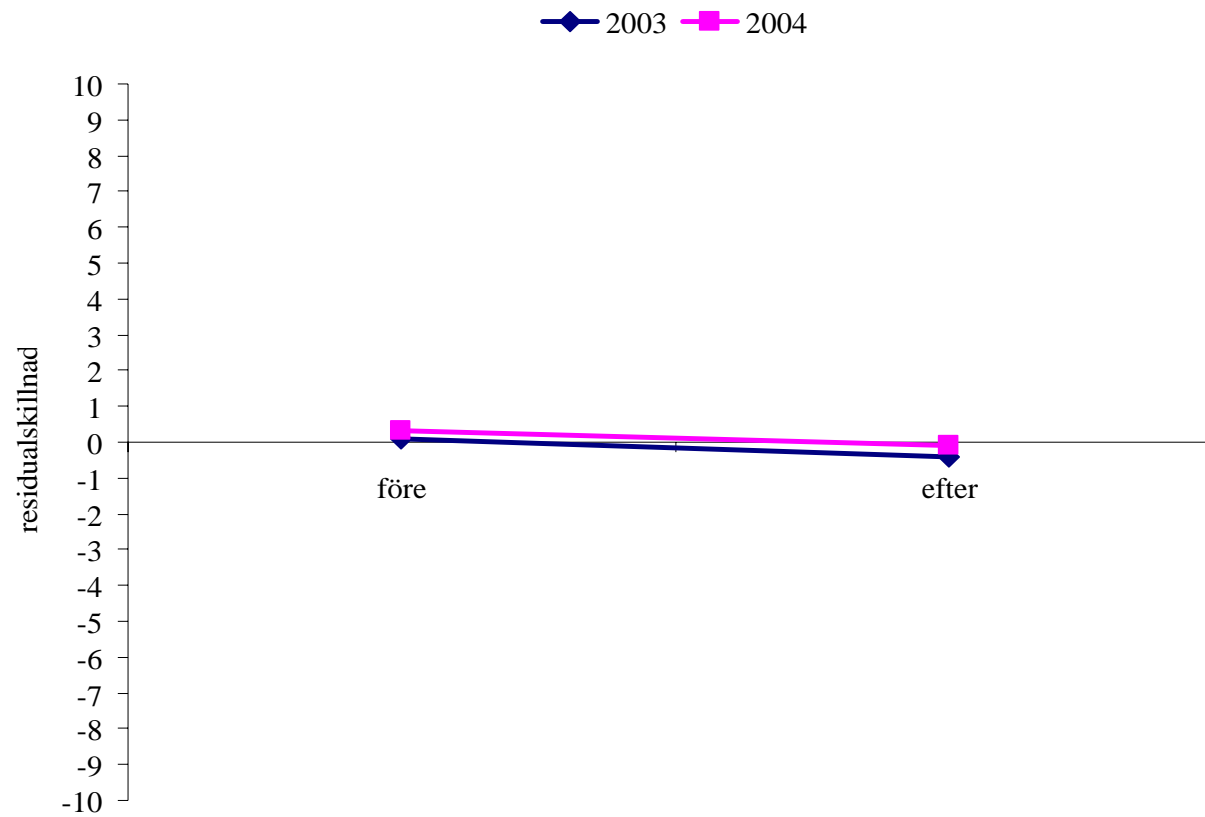


The effect of school inspections

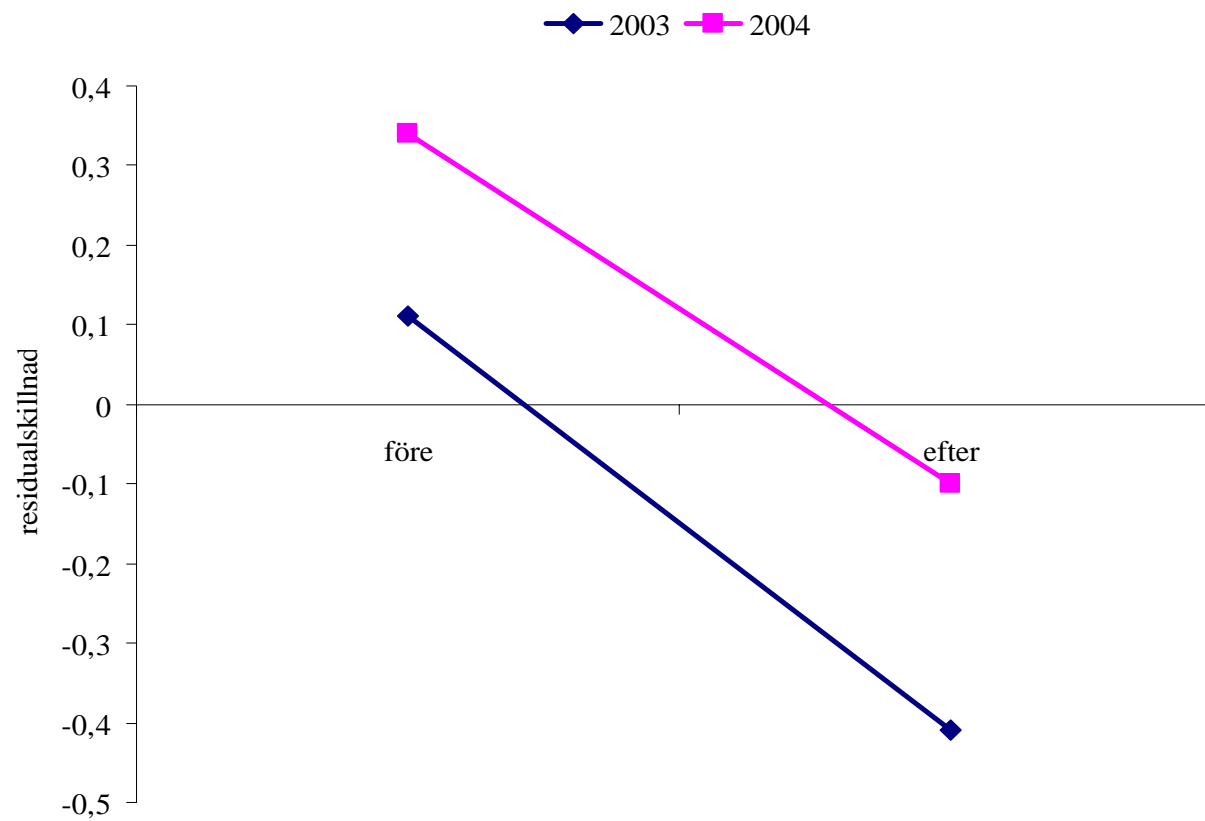
■ ej förändrade ■ mer positiva ■ mer negativa



The effect of school inspections



The enlarged effect of school inspections



Important factors in a school understood as a local organization

- o Shared aims
- o Communication system
- o Groupings
- o Decision making system
- o Time budget
- o Norms
- o Evaluation regularities
- o Reward system